

Innovation and systems leadership

Dr Fiona O'Neill

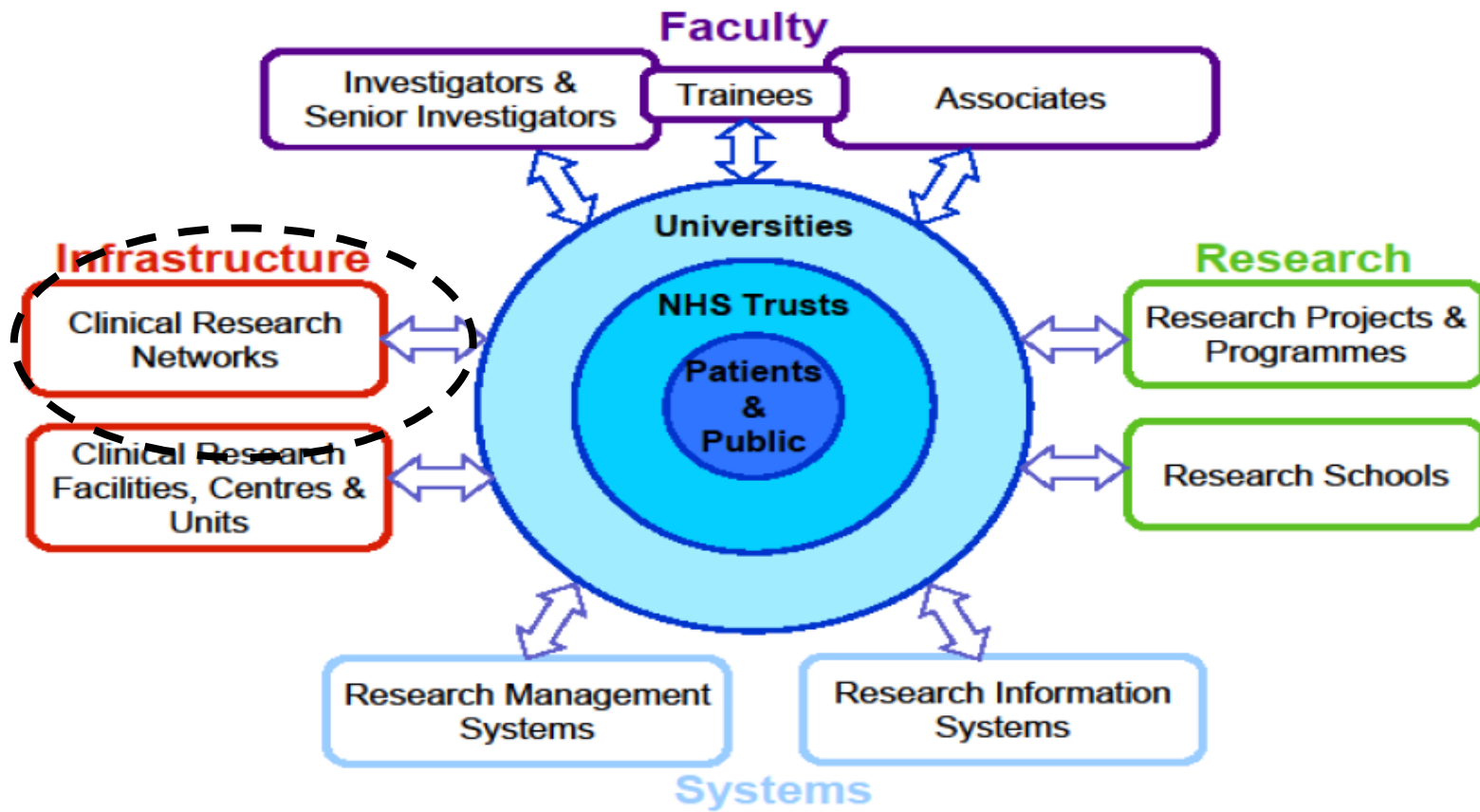
Head of Workforce and Learning

NIHR Clinical Research Network
Coordinating Centre

fiona.h.oneill@nihr.ac.uk

The Research Arm of the NHS

The NIHR health research system



One national network

- Research active engaged clinicians across all 30 therapy areas
- Detailed understanding of care pathways
- 15 Local Clinical Research Networks (LCRNs)
- Allows flexible deployment of resources
- Links with rest of UK



Research delivery in the NHS



NHS Engagement in Research (2015-16)

- **100%** of NHS trusts supported active participation in clinical research
- **42%** of General Medical Practices now research active
- Over **600, 000** people participated in clinical research studies

Responding to national priorities

- **35,000** people participated in research associated with dementias and neurodegeneration (Join dementia Research)

Improved Study Set-Up and Delivery

- Set-up and delivery to time & target
- Increasing proportion of commercial contract studies

Primary Care

HLO 6c - the proportion of General Medical Practices recruiting each year into NIHR CRN portfolio studies (cumulative measure) **Target = 25%**

2014-15 = 41%

2015/16 = 42%

2016/17 Q1 = 28%

2015/16 Q1 = 16%



Primary Care recruitment

- 2015/16 Primary care top recruiting specialty

PC = 99,480 CRN = 605,596

PC contribution >16%



Time and target

- 2015/16 Commercial = 67%

Non-commercial = 87%

Join Dementia Research



National Institute for Health Research



What is 'Join dementia research'?

.... a nationwide **online and telephone service** that will help you find, discover and take part in vital dementia research studies

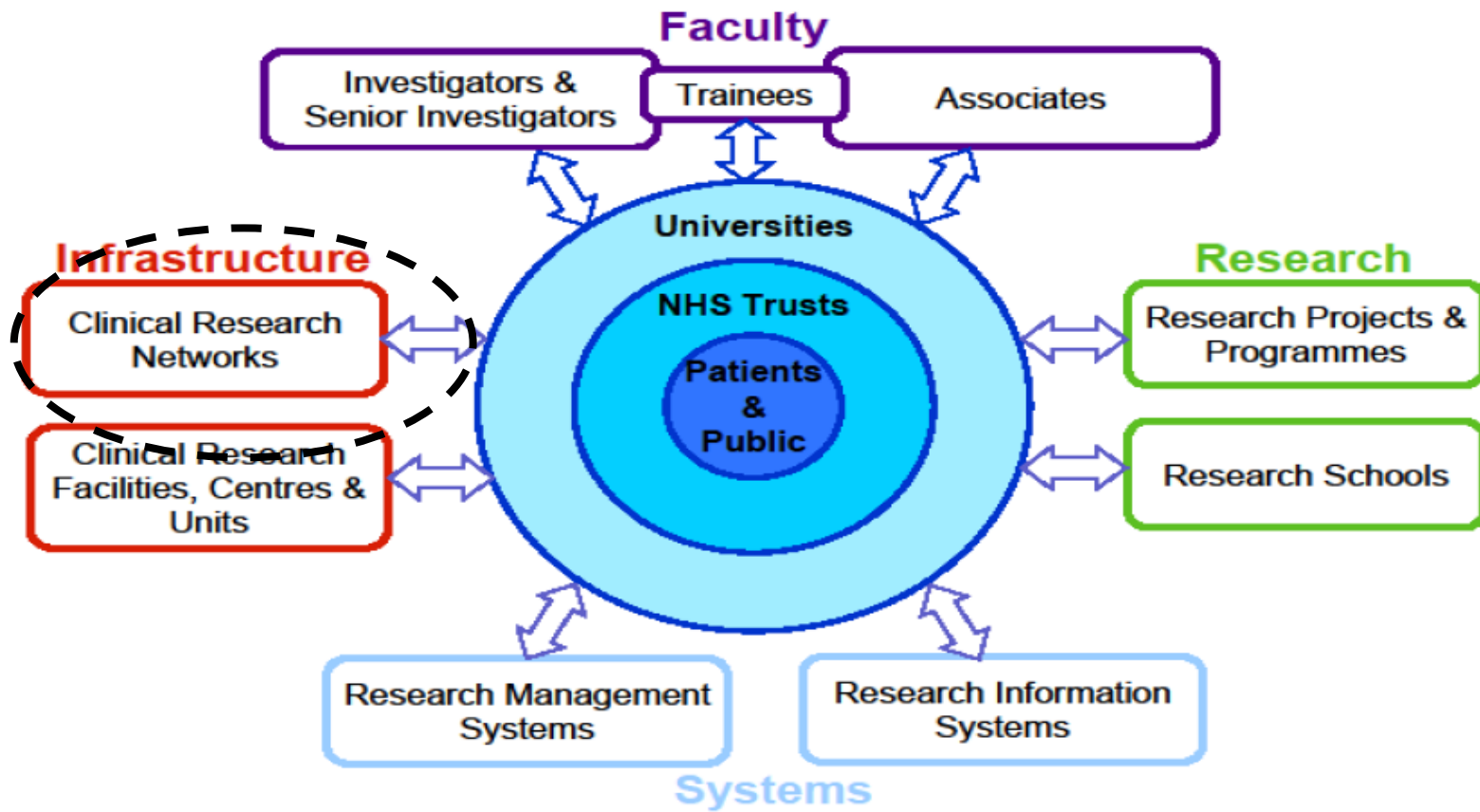
The screenshot shows the homepage of the 'Join dementia research' website. At the top, there is a navigation bar with links for 'Home', 'About the service', 'How it works', 'Why sign up?', 'Any questions?', and 'For professionals'. Below the navigation bar is a main banner featuring a woman looking at a laptop. The banner includes the text 'WHO CAN HELP RESEARCHERS TO BEAT DEMENTIA?' and 'YOU'. To the right of the banner is a large pink circle with the text 'SIGN UP TODAY'. Below the banner, there is a section titled 'Welcome to 'Join dementia research', a place to register your interest in participating in dementia studies.' followed by a paragraph explaining the service. At the bottom, there are sections for 'What's new' and 'Your stories', and a 'Key things you should know about the service' section with a list of bullet points.

'Join dementia research' is funded by the Department of Health and delivered in partnership with the National Institute for Health Research, Alzheimer Scotland, Alzheimer's Research UK and Alzheimer's Society.



The Research Arm of the NHS

The NIHR health research system



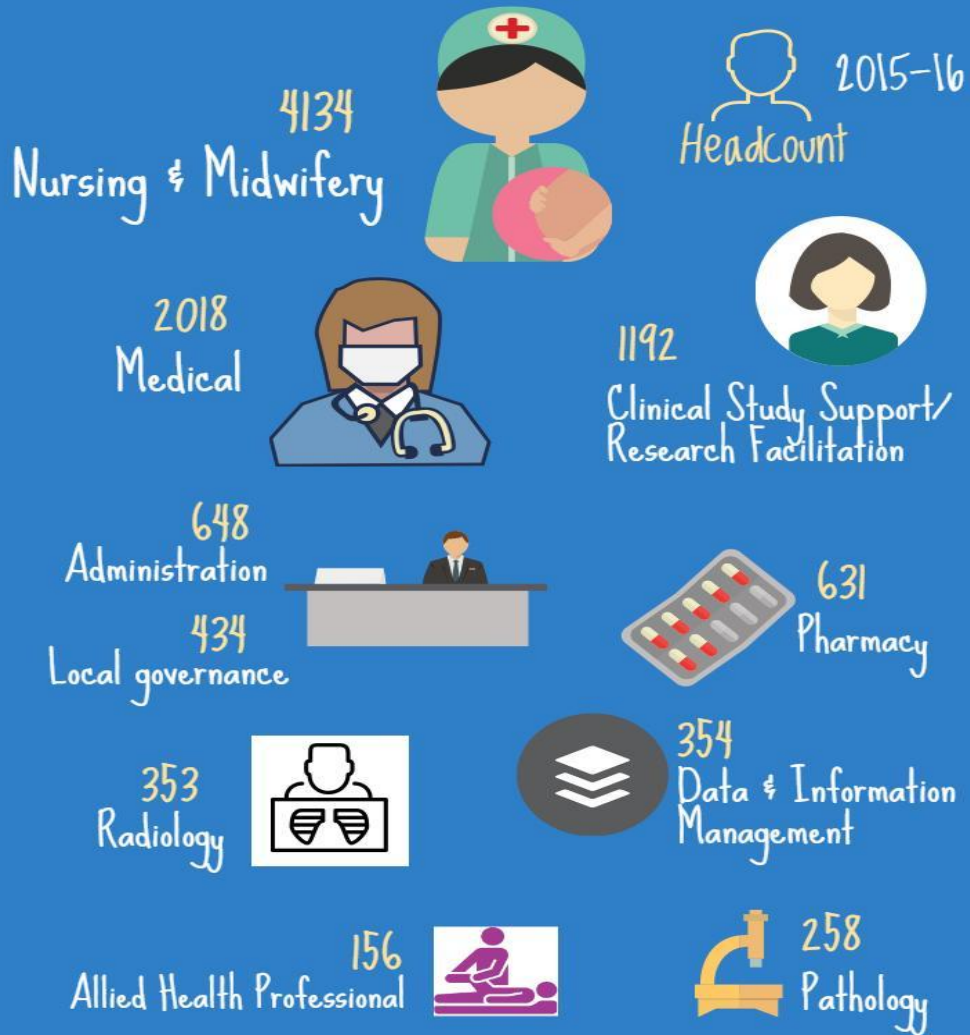
NIHR People



30,000 people are members of NIHR Faculty- collective term for the people the NIHR supports to lead and deliver research and to train as the next generation of health researchers

- **Investigators** (approx 9,000)
- **Senior Investigators** (selected by competition -200)
- **Trainees**(approx 5,000 in 2014/15)
- **Associates**-research delivery (over 10,000)

Research Delivery in the NHS



HEE/NIHR Integrated Clinical Academic Programme



National Institute for
Health Research



An introduction to practical clinical research, from trial design and data management through to experiencing primary research – 30 days of contact time with an academic mentor and research group

An opportunity for clinicians with an interest in research to design and undertake a clinical research project whilst attending taught modules pertaining to relevant theory, process and techniques

An opportunity for graduate clinicians with some research experience and aspirations for a clinical academic career to obtain a PhD whilst maintaining professional practice and development

An opportunity for early post-doctoral clinicians to combine independent research in an academic position with continued professional practice and development

An opportunity for practicing clinicians with independent clinical research experience to undertake further funded research and develop as a clinical academic leader

The “still to do”.



- A health system that appreciates the value of research and “makes space for it”
- Maintaining (and growing) a well educated and a well prepared multiprofessional workforce: right skills at the right time.
- Increasing community research capacity and capability
- Supporting digital technologies that meet the needs of the clinical research team
- Use of data-delivery going to where delivery capacity and populations are

Our priorities



- Increasing community research capacity
- Public health research-better use of local data to identify where capacity and populations are
- Big Data
- More effective use of digital technologies

Key communities



- Queens Nursing Institute
- Admiral Nurses
- Health Visitors
- “Every nurse a research nurse”

Systems leadership



Leadership across organisational and geopolitical boundaries, beyond individual professional disciplines, within a range of organisational and stakeholder cultures, often without direct managerial control

(Virtual Staff College-Exceptional leadership for Exceptional Times: Synthesis Paper (2013))

Challenge: As systems leaders.....



- How can clinical nurse academics support a whole system approach?
- How do we work together to achieve this, what more can we do?
- How can we build capacity and capability in the community?
- How do we embed clinical research care across our workforce?

Useful contacts



NIHR Trainees Coordinating Centre

<http://www.nihr.ac.uk>

NIHR Clinical Research Network

<https://www.crn.nihr.ac.uk/>

NIHR

<http://www.nihr.ac.uk/>